

Anti-F3(CD142) hlgG1 Reference Antibody(Tisbio)

Product Information

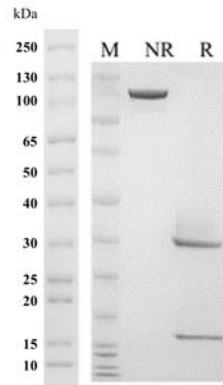
Product Name	Anti-F3(CD142) hlgG1 Reference Antibody(Tisbio)
Storage temp.	Store at 2-8°C short term (1-2 weeks).Store at $\leq -20^{\circ}\text{C}$ long term. Avoid repeated freeze-thaw.
Catalog# / Size	GM-87834MAB-1mg / 1 mg GM-87834MAB-5mg / 5 mg GM-87834MAB-25mg / 5 mg*5 vials GM-87834MAB-50mg / 50 mg GM-87834MAB-100mg / 50 mg*2 vials

Antibody Information

Expression System	CHO
Aggregation	< 5% as determined by SEC-HPLC
Purity	> 95% as determined by SDS-PAGE
Endotoxin	< 1 EU/mg, determined by LAL gel clotting assay
Sterility	0.2 μm Filtered
Target	F3(CD142)
Clone	Tisotumab
Alternative Names	TF, TFA
Source/Isotype	Human IgG1(REEM), kappa
Application	Flow cytometry
Description	Tissue factor, also called platelet tissue factor, factor III, or CD142, is a protein encoded by the F3 gene, present in subendothelial tissue and leukocytes. Its role in the clotting process is the initiation of thrombin formation from the zymogen prothrombin. Thromboplastin defines the cascade that leads to the activation of factor X—the tissue factor pathway.
Formulation	phosphate-buffered solution, pH 7.2-7.4.

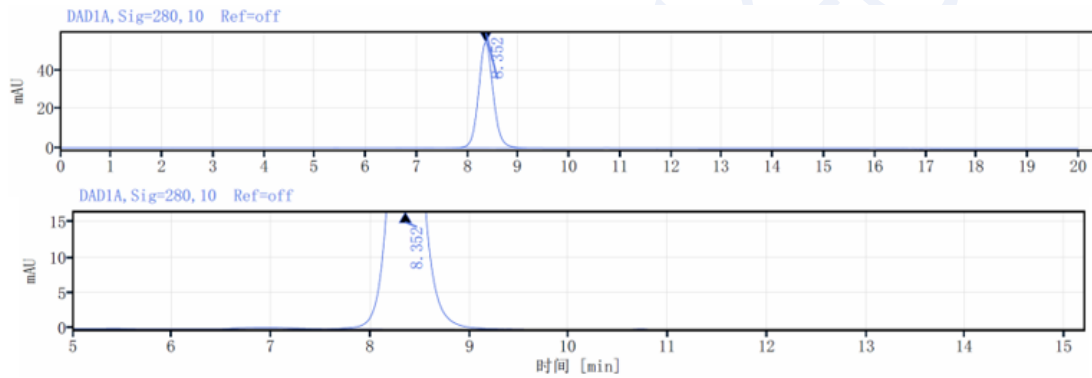
Data Examples

SDS-PAGE



On SDS-PAGE under reducing (R)/non-reducing(N-R) condition. The gel was stained overnight with Coomassie Blue. The purity of the protein is greater than 95%.

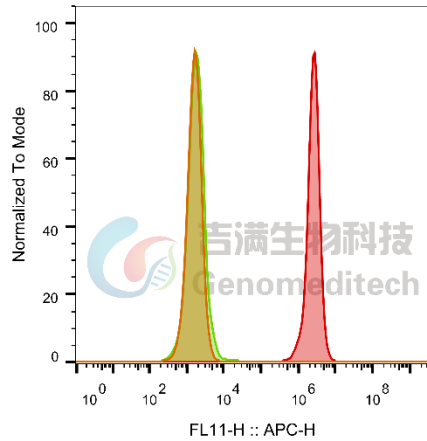
SEC-HPLC



The purity of this product is more than 95% verified by SEC-HPLC

Flow cytometry

H_F3(CD142) HEK-293 Cell Line (Catalog # GM-C39989) was stained with Anti-F3(CD142) hlgG1 Reference Antibody(Tisbio) (Catalog # GM-87834MAB) or isotype control antibody, followed by anti-Human IgG APC-conjugated Secondary Antibody.

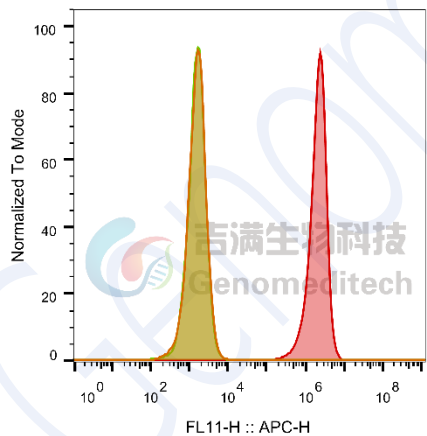


SampleID	Geometric Mean : FL11-H
HEK-293 anti-F3(CD142)+APC-2nd Ab	1619
HEK-293 H_F3(CD142) H_IgG+APC-2nd Ab	1834
HEK-293 H_F3(CD142) anti-F3(CD142)+APC-2nd Ab	2.46E6

Fig. FACS

Flow cytometry

Cynomolgus_F3(CD142) CHO-K1 Cell Line (Catalog # GM-C39991) was stained with Anti-F3(CD142) hlgG1 Reference Antibody(Tisbio) (Catalog # GM-87834MAB) or isotype control antibody, followed by anti-Human IgG APC-conjugated Secondary Antibody.



SampleID	Geometric Mean : FL11-H
CHO-K1 anti-F3(CD142)+APC-2nd Ab	1527
CHO-K1 Cyno_F3(CD142) H_IgG+APC-2nd Ab	1533
CHO-K1 Cyno_F3(CD142) anti-F3(CD142)+APC-2nd Ab	2.00E6

Fig. FACS